



INDIVIDUAL PATHWAY PLANNING

Year 11

- ➡ **Pathway planning** enables you to explore, identify and evaluate the learning and work pathways available, to recognise opportunities, make connections and prepare for transitions.



Individual pathway planning provides the opportunity for you to reflect on the importance of being able to manage your own career. By engaging with individual pathway planning you are well placed to connect who you are and what you are learning with future learning and therefore support the career planning required to navigate changing transitional pathways.

Profile

MY NAME

DATE

SCHOOL

CAREER QUIZ

Completion of a career quiz will provide you with valuable information about your motivation, skills, values, aptitudes and attitudes. This information will help your pathway planning activities.

Give yourself a definition of what success might look like.

What am I trying to accomplish?



MY CAREER

What do I do next?

If all things go perfectly, what might it look like?

Reflect on changes (if any) you have noticed in your attitude, interests, learning experiences and skills gained since last year.

Three new skills you think you have gained

Three new learning experiences

Three new interests

Any noted changes in attitude

1

2

3

IDENTIFYING AND REFLECTING ON YOUR VALUES

It is important to reflect on your own personal values. Highlight the values that are important to you now.

Home safety Respect Duty
Autonomy Friendship Work Order Teamwork
Individuality Excellence Decisiveness Vision Health Fairness
Nature Dignity Imagination Faith Achievement Country
Growth Trust Strength Involvement Compassion
Challenge Greatness Courtesy Justice Balance Status Honesty Purpose
Environment Education Risktaking Happiness Winning
Fame Innovation Loyalty Joy Freedom Empathy Discipline
Leadership Change Learning Fun Success Communication
Curiosity Perfection Wisdom Community Authenticity
Personal Development Quality Money Independence
Beauty



What are your top three or four values now?
Why are these important to you at this time of your life?

1

2

3

4



Who are the most important people to you now?
Why are these people important to you?

1

2

3

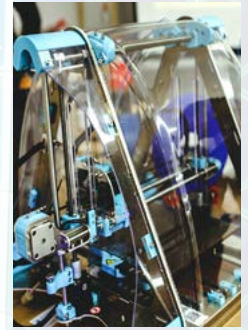
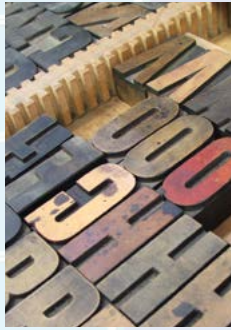
4

5

WORLD OF WORK - PRESENT

Consider work you do now or have done recently – workplace learning, paid casual work, volunteering in the community, responsibilities at home or in a family business and work in school. What are some of your experiences in these areas?

① How quickly industry changes...

[illegible]

Changes to the way we work now and into the future are evident with economic forces such as automation, globalisation and collaboration driving these changes. Consider these changes and identify the knowledge, skills and capabilities you will need to successfully participate in the world of work.*

Future opportunities and risk*



Future of work for today's 15 year old

What work we will do

Where we will work

How we will work

1.1 Automation:

Ever-smarter machines performing ever-more-human tasks

1.2 Globalisation:

Our workforce goes global and the global workforce comes to us

1.3 Collaboration:

Many jobs, with many employers, often at the same time

2. Opportunities

- > Lower barriers
- > More flexibility
- > Wider markets and more specialisation

3. Risks

- > Unemployment
- > Inequality
- > Insecurity

Changes to:	Economic Forces*	Knowledge, skills and capabilities needed
The type of work that we do	Automation Ever-smarter machines performing ever-more-human tasks	
Where we do that work	Globalisation Our workforce goes global and the global workforce comes to us	
How we do that work	Collaboration Many jobs, with many employers, often at the same time	

PATHWAY PLANNING

Websites such as myfuture and Job Outlook provide information which supports pathway planning activities including details of the levels of training or higher education required for occupations.



How you move from one qualification into another can be along a direct pathway or an indirect pathway

UNIVERSITY
PATHWAY

VET
PATHWAY

AUSTRALIAN
APPRENTICESHIP
PATHWAY

DIRECT ENTRY
INTO THE
WORKFORCE

GAP
YEAR



Understanding these options is essential for you to successfully plan and manage your career

Which pathway are you considering at this point in time?

1

A pathway I am considering at this point:

Attributes needed	Skills needed	What I need to get there School results and qualifications	Pathways direct or indirect

The job market of the future will come from jobs that robots cannot do.

Which pathway are you considering at this point in time?

2

A pathway I am considering at this point:

Attributes needed	Skills needed	What I need to get there School results and qualifications	Pathways direct or indirect

Which pathway are you considering at this point in time?

3

A pathway I am considering at this point:

Attributes needed	Skills needed	What I need to get there School results and qualifications	Pathways direct or indirect

REVIEW MEETING LEARNING GOALS

Using your last report, consider whether you are meeting your short term goals at school.

Courses or programs I am studying this year	Results/Grade	Am I on track?	What do I need to do to get on track, or to stay on track?

VET qualifications	Proportion of units completed. For example: 4/12		

Give your OLN results	Current achievement category
OLNA component	
Reading category	
Writing category	
Numeracy category	



An action plan describes how you will use strategies to meet your objective. It is important to remember that an action plan is always a 'work in progress'. Keep it visible and review it regularly in light of your changing needs, new opportunities and chance happenings.

Plan

Date:	Date:
Describe	Revise (add any revisions to this plan)
What achievement or change do you want to bring about?	
Why is this important to you now?	
What do you know about yourself that will affect this plan? What strengths and skills will you need to action your plan?	
What other barriers may stop you from progressing your plan?	
What do you know about yourself that will affect this plan? Consider some challenges.	
Who could support you? Why would you choose this person?	
Who else could support you? Why would you choose this person?	
What resources do you need to action your plan?	
What steps do you need to take? Describe your plan in steps.	

What do I do next?

	Describe	Timeframe
1		
2		
3		
4		
5		
Are you on track?		

WHAT'S IN MY PORTFOLIO?

What's in my portfolio? 	I have this 	Need to follow up with... 
Up-to-date resume		
Sample cover letter		
Details of two referees		
Examples of my best work samples — photographs, media		
Individual pathway plan		
Certificates and awards		
Nationally recognised qualification(s)		
WorkSafe SmartMove Certificates		
Workplace learning supervisor's report		
Workplace learning logbook		
Employer reference letter		
Personal reference letter		
Formal training (White Card, RSA, Barista, First Aid)		
First Aid Certificate		
Tax File Number		
Unique student identifier USI: This 10 digit number is required for anyone undertaking VET qualifications		

A useful resource

The School Curriculum and Standards Authority [Year 12 Information Handbook](#) provides you with information and advice about the final year of school.

Sign	Date
You	
Your mentor/teacher	
Your parent/guardian	



Development of this Individual Pathway Planning resource has been guided and informed by the:

Australian Blueprint for Career Development, Commonwealth of Australia, 2010

Western Australian Guidelines for Career Development and Transitions, Commonwealth of Australia, 2012

* FYA (Foundation for Young Australians) (2015) The New Work Order: ensuring young Australians have skills and experience for the jobs of the future not the past. Foundation for Young Australians: Melbourne.

Photograph of 'Japanese woman writing' from the State Library of Victoria historical images collection (www.slv.vic.gov.au) by George Rose.

All location photography used in this booklet was shot in Perth, Western Australia.